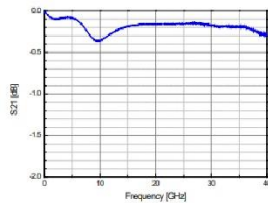




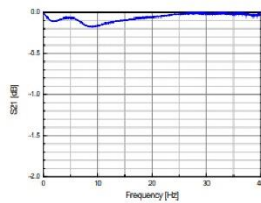
ABCN series		ABCU series			
Tin(Sn) plating		Tin(Sn) plating		Gold(Au) plating	
	0201inch/0603mm		0402inch/1005mm		0201inch/0603mm
			0402inch/1005mm		0201inch/0603mm

Part No.	Size		Rated Voltage DC Volts	Dielectric Material EIA Code	Capacitance (uF)	Capacitance Tolerance EIA Code	Frequency Range -3dB point	Insertion Loss dB typical	Termination Plating RoHS (Sn/Ni)
	EIA (inch)	JIS (mm)							
ABCUA 04F 0XX 104M NDG	01005	0402	4	X5R	0.1uF	M (20%)	16KHz - 40GHz (+)	<0.5dB (16KHz - 40GHz)	Sn/Ni
ABCUA 04F 0XX 104M GDG	01005	0402	4	X5R	0.1uF	M (20%)	16KHz - 40GHz (+)	<0.5dB (16KHz - 40GHz)	Au/Ni
ABCUA 06F 0XX 103M NDG	01005	0402	6.3	X5R	0.01uF	M (20%)	160KHz - 40GHz (+)	<0.5dB (160KHz - 40GHz)	Sn/Ni
ABCUA 06F 0XX 103M GDG	01005	0402	6.3	X5R	0.01uF	M (20%)	160KHz - 40GHz (+)	<0.5dB (160KHz - 40GHz)	Au/Ni
ABCUA 06F 0XX 473M NDG	01005	0402	6.3	X5R	0.047uF	M (20%)	34KHz - 40GHz (+)	<0.3dB (34KHz - 40GHz)	Sn/Ni
ABCUA 06F 0XX 473M GDG	01005	0402	6.3	X5R	0.047uF	M (20%)	34KHz - 40GHz (+)	<0.3dB (34KHz - 40GHz)	Au/Ni
ABCUA 102 01X 103P NDG	0201	0603	10	X7S	0.01uF	P (+100/-0%)	160KHz - 40GHz (+)	<0.3dB (160KHz - 40GHz)	Sn/Ni
ABCUA 102 01X 103P GDG	0201	0603	10	X7S	0.01uF	P (+100/-0%)	160KHz - 40GHz (+)	<0.3dB (160KHz - 40GHz)	Au/Ni
ABCUA 10S 01X 104K NDG	0201	0603	10	X7R	0.1uF	K (10%)	16KHz - 40GHz (+)	<0.4dB (16KHz - 40GHz)	Sn/Ni
ABCUA 10S 01X 104K GDG	0201	0603	10	X7R	0.1uF	K (10%)	16KHz - 40GHz (+)	<0.4dB (16KHz - 40GHz)	Au/Ni
ABCUA 102 02X 104K NDG	0402	1005	10	X7S	0.1uF	K (10%)	16KHz - 40GHz (+)	<0.5dB (16KHz - 35GHz) <1.0dB (35GHz - 40GHz)	Sn/Ni
ABCUA 102 02X 104K GDG	0402	1005	10	X7S	0.1uF	K (10%)	16KHz - 40GHz (+)	<0.5dB (16KHz - 35GHz) <1.0dB (35GHz - 40GHz)	Au/Ni
ABCUA 16F 01X 104K NDG	0201	0603	16	X5R	0.1uF	K (10%)	16KHz - 40GHz (+)	<0.4dB (16KHz - 40GHz)	Sn/Ni
ABCUA 16F 01X 104K GDG	0201	0603	16	X5R	0.1uF	K (10%)	16KHz - 40GHz (+)	<0.4dB (16KHz - 40GHz)	Au/Ni
ABCU 16F 01X 104K NDG	0201	0603	16	X5R	0.1uF	K (10%)	16KHz - 40GHz (+)	<0.4dB (16KHz - 40GHz)	Sn/Ni
ABCU 16F 01X 104K GDG	0201	0603	16	X5R	0.1uF	K (10%)	16KHz - 40GHz (+)	<0.4dB (16KHz - 40GHz)	Au/Ni
ABCUA 16F 02X 104K NDG	0402	1005	16	X5R	0.1uF	K (10%)	16KHz - 40GHz (+)	<0.4dB (16KHz - 40GHz)	Sn/Ni
ABCUA 16F 02X 104K GDG	0402	1005	16	X5R	0.1uF	K (10%)	16KHz - 40GHz (+)	<0.4dB (16KHz - 40GHz)	Au/Ni
ABCU 50S 02X 104K NDG	0402	1005	50	X7R	0.1uF	K (10%)	16KHz - 40GHz (+)	<0.5dB (16KHz - 35GHz) <1.0dB (30GHz - 40GHz)	Sn/Ni
ABCU 50S 02X 104K GDG	0402	1005	50	X7R	0.1uF	K (10%)	16KHz - 40GHz (+)	<0.5dB (16KHz - 35GHz) <1.0dB (35GHz - 40GHz)	Au/Ni

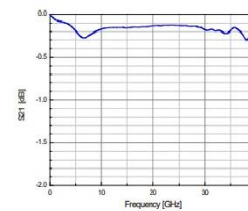
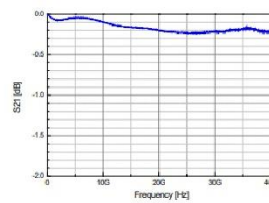
01005 10 nF [S21]



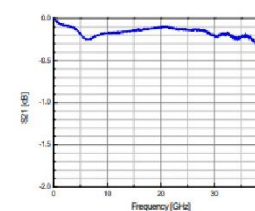
01005 47 nF [S21]



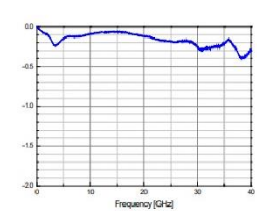
01005 100 nF [S21]



0201 10 nF [S21]



0201 100 nF [S21]



0402 100 nF [S21]