

Welcome to **Tech-SELECT™**, a design and support software tool that provides access to all electrical and mechanical parameters for ATC RF Capacitor, Inductor, and Resistive Components. This program includes component performance characteristics in the form of Smith Charts, S- Parameters, RF current and voltage curves, ESR, Q, impedance and more. All RF parameters can be achieved at frequencies entered by the user. **Tech-SELECT™** provides accurate performance data based on actual test data for every device in the library. These same files are used to produce electrical models that can be used by a variety of RF simulation and design software tools, including Agilent EEs of ADS, AWR Microwave Office, Ansoft Designer, and Eagleware-Elanix GENESYS.

Tech-SELECT™ is simple to use, just enter your critical Freq., Cap Value and sort criteria on the first page (see below) and outputs all curve and data as follows:

Enter Frequency, Cap Value & Sort Criteria

ATC Tech-SELECT Component Selection

Select Component: Capacitors

Enter Capacitance: 39 pF

Frequency: 928 MHz

Sort Capacitors by: Working Voltage (H to L), Case Size (Small to Large), ESR (Low to High), Q (High to Low), Resonant Freq (H to L)

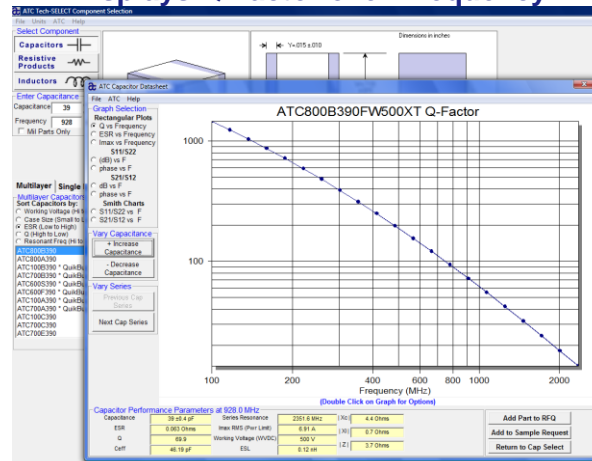
Termination Code: Solder Plate

Capacitance Tolerance: F ±1%, G ±2%, J ±5%, K ±10%, M ±20%

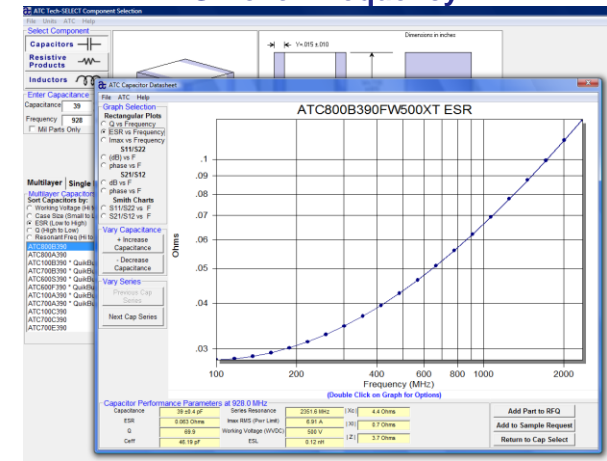
Parameters at 928.0 MHz:

ESL	0.63 Ohms	X _L	4.4 Ohms
ESR	0.12 nH	X _C	6.7 Ohms
Q	69.9	Z	3.7 Ohms
Cap	46.19 pF		
Imax RMS (Per Limit)			631 A
Working Voltage (VWDC)			500 V

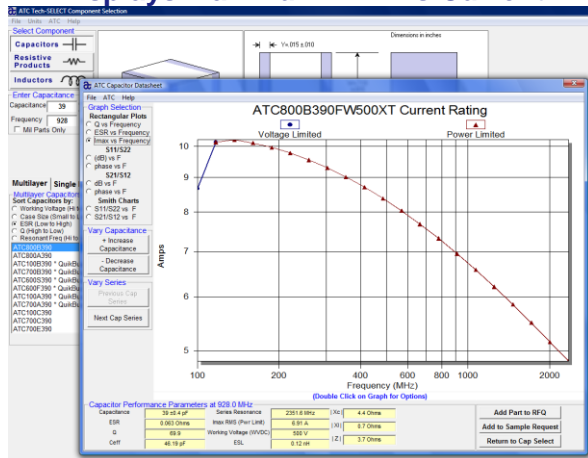
Displays Q Factor over Frequency



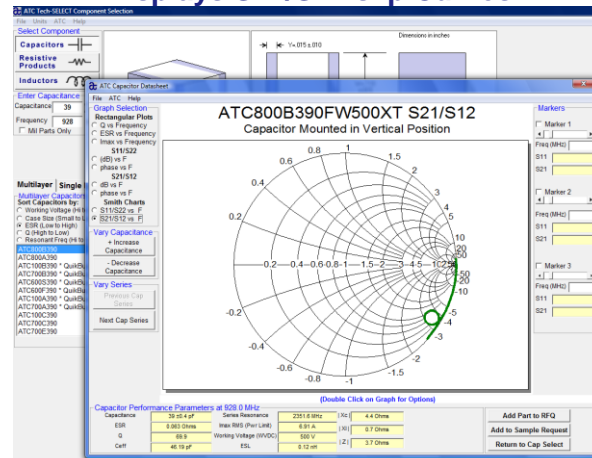
ESR over Frequency



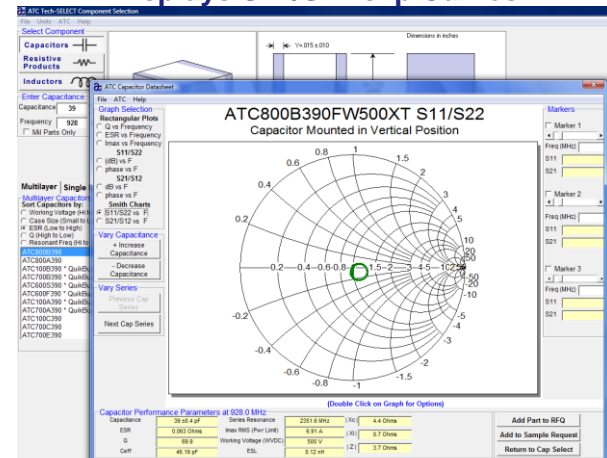
Displays Maximum RF rms Current



Displays S21/S12 s2p Curves



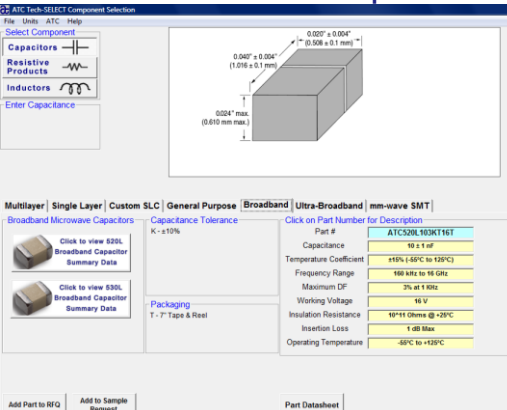
Displays S11/S22 s2p Curves



Once you have completed your selection process, you can export the s2p data file or device model into your simulation tool for further analysis. **ATC's** models are all measurement-based models and are both substrate and part-value scalable, as well as represent high-order resonant effects and accurate effective series resistance. Each model includes complete documentation detailing the test fixtures used, measurement conditions, range of validity, and model-to-measurement data comparisons for all series of RF Capacitors.

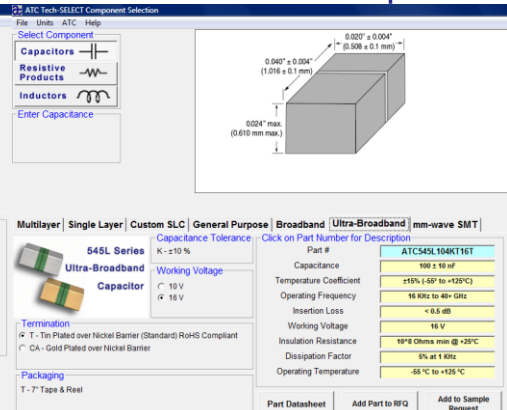
Tech-SELECT™ can also perform this same Selection Process for other **ATC Products**, including the following:

RF Broadband Capacitors



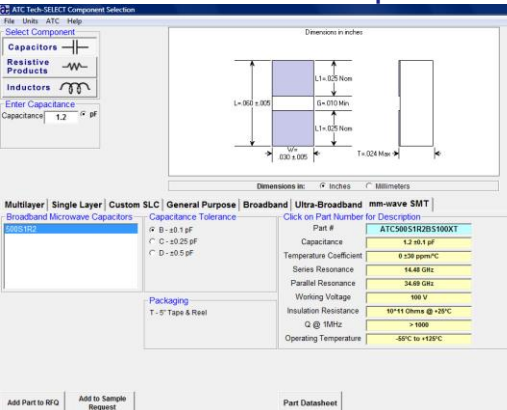
Broadband Capacitor Selection

Ultra-Broadband Capacitors



Ultra-Broadband Capacitor Selection

mm-wave SMT Capacitors



mm-wave SMT Capacitor Selection

About **ATC**: **ATC** designs, develops, manufactures and markets electronic components, including ceramic multilayer capacitors and custom thin film circuits. ATC products are utilized in a broad range of commercial and military applications, including wireless infrastructure, fiber optics, medical electronics, semiconductor manufacturing equipment and satellite equipment. Modelithics currently provides Global Models for several families of ATC components.

ATC's Design Support Software - New Enhanced 2009 Version Tech-SELECT™

By selecting and sorting on the most critical parameters this program generates a complete list of product options with part numbers. You can view and print any data sheet for the selected products. Download size is 8.9 MB. Tech-Select is compatible with Windows 2000, XP and Vista

For assistance in using to **Tech-SELECT™**, contact your account **Microwave Resource Engineer** at **Theta-j Associates**.

DISCLAIMER: American Technical Ceramics (ATC) has made every effort to make this information as accurate as possible. However, no responsibility is assumed by ATC for its use, nor any infringements of rights of third parties which may result from its use. ATC reserves the right to revise the content or modify its product line without prior notice.